



SALEM BULK - VALLEY VIEW PROJECT

Wabash Valley Power Alliance, Citizens Electric’s wholesale power supplier, is proposing to construct a new, approximately 22-mile 69 kV* transmission line to improve energy reliability for local communities in Southeast Missouri. The new line will connect the Salem Bulk Substation north of Farmington to the Valley View Substation north of Bloomsdale. The proposed in-service date for the project is early 2026.

Connecting the Salem Bulk Substation located north of Farmington to the Valley View Substation located north of Bloomsdale allows power to be restored much more quickly in the event of an outage. This also provides flexibility for maintenance of the existing system without causing outage impacts to the Membership. Most importantly, it assures the necessary voltage support to homes and businesses in the future. The project will energize two future substations to reduce the electric load that has been increasing on the substations due to residential growth. It is extremely important to be proactive in building a strong energy grid in Ste. Genevieve county to accommodate future energy needs.

SCHEDULE

2021 - 2023

- o Engineering & permitting
- o Field surveys
- o Obtain easements

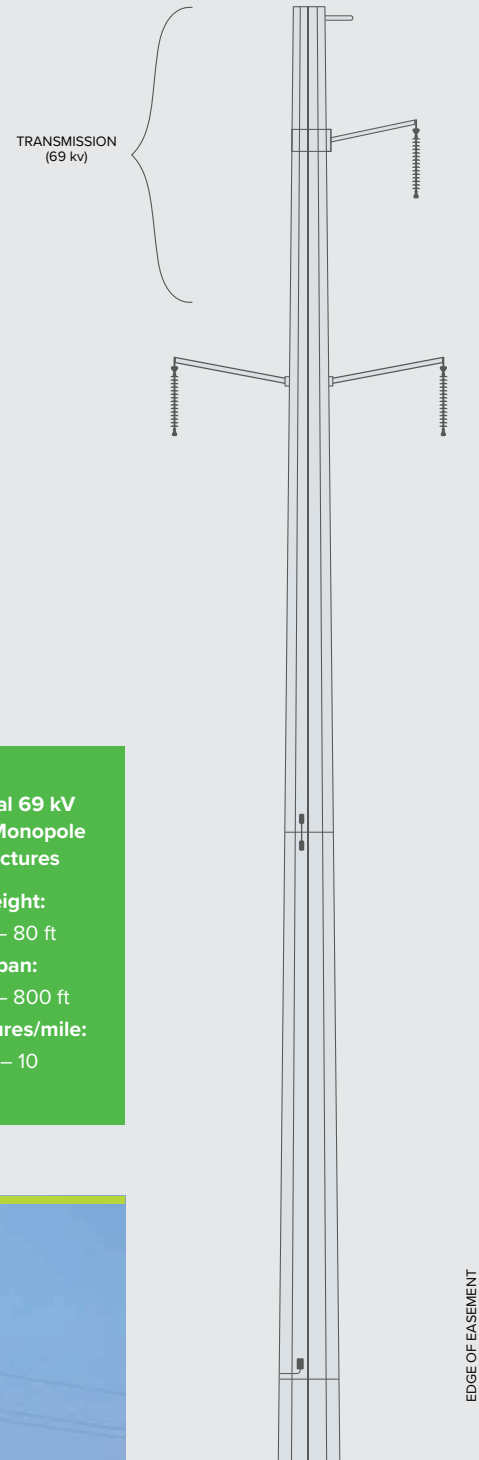
EARLY 2026

- o Project in-service

2023 - 2026

- o Construction

*1kV = 1,000 volts

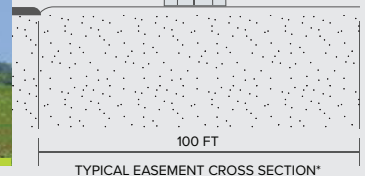


Typical 69 kV Steel Monopole Structures

Height:
65 – 80 ft

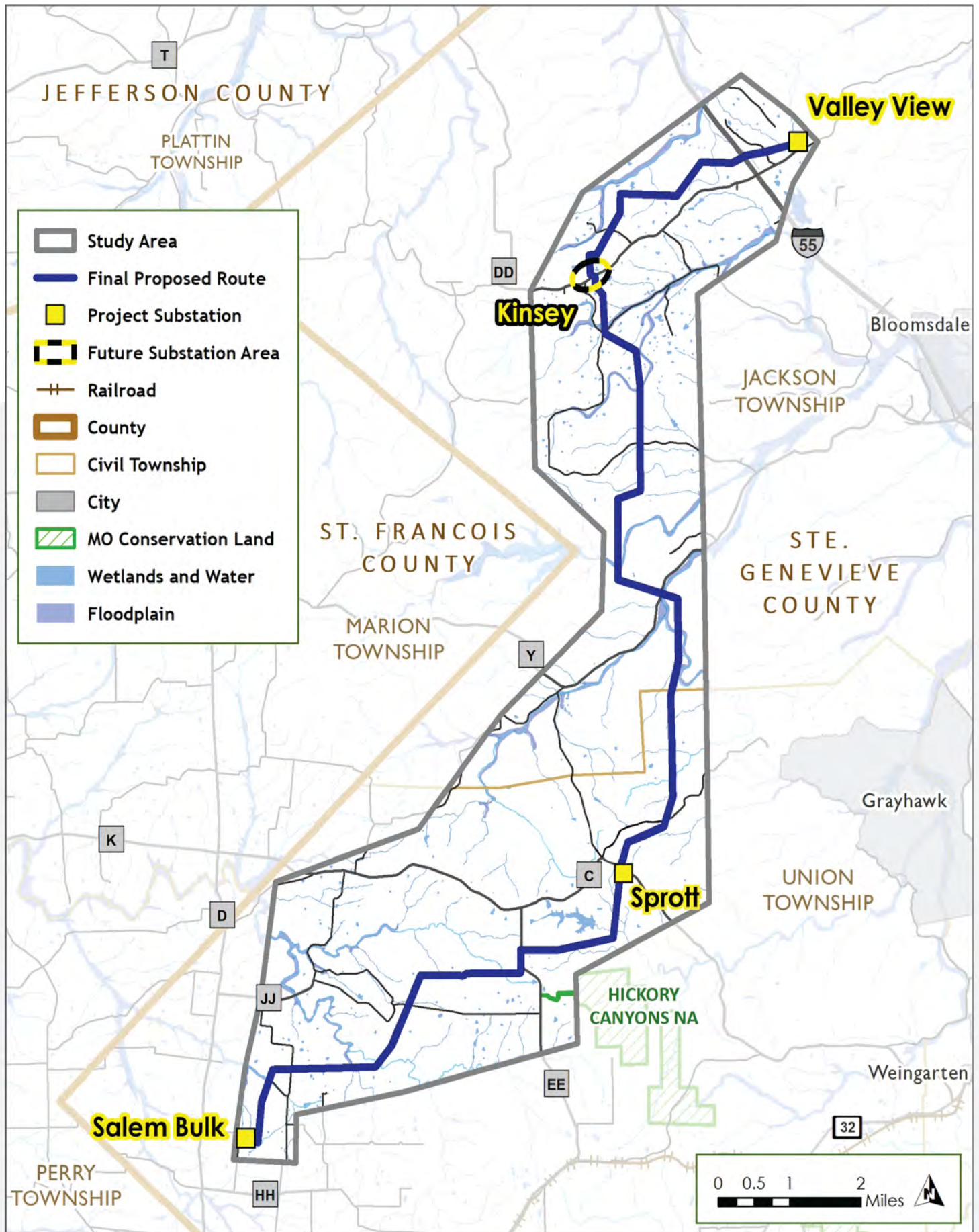
Span:
600 – 800 ft

Structures/mile:
6 – 10



*Vegetation is removed

FINAL PROPOSED ROUTE



For more information about the project, please visit: wvpa.com/salembulk or call (888) 997-0766